



FOSFIMAX Ca[®]

NATURAL PLANT DEFENCE ACTIVATOR AGAINST FUNGUS AND BACTERIA

Benefits of use

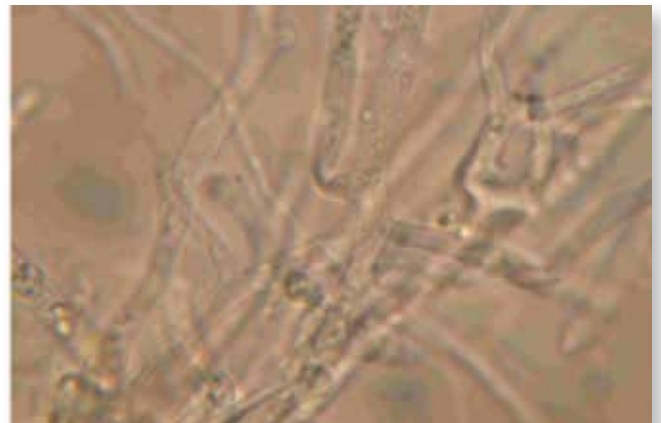
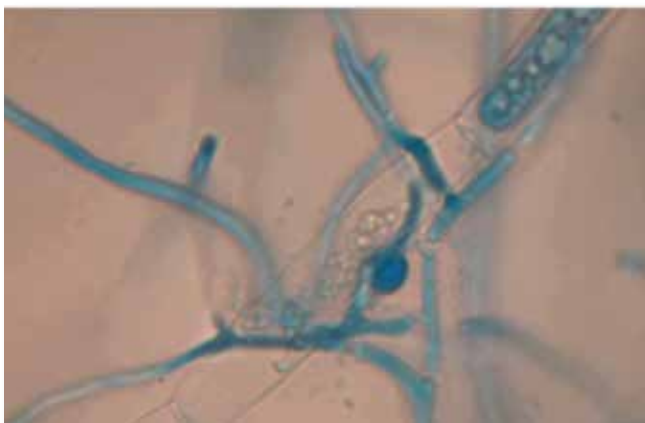
FOSFIMAX Ca[®] is a foliar fertiliser formulated with calcium phosphite, developed for the prevention and correction of calcium deficiencies. Its function is to activate the plant's natural endogenous defences against pathogen agents such as fungus or bacteria through the synthesis of phytoalexins, suberin, lignin and derived compounds from cinnamic acid, with an additional systemic bactericidal and/or fungicidal action. Its curative action has a microbial effect by blocking the sporulation of the pathogenic organism preventing the formation of reproductive structures by modifying its metabolism and its cell wall. Its high phosphorus content also acts as a biostimulant, promoting proper growth and development of the plant in times of maximum need such as flowering or fruiting, and therefore increasing the yield and quality of the crop.

FOSFIMAX Ca[®] is a formulation designed to ensure optimal absorption and translocation in a systemic manner, whose effectiveness has been proven over the years, both as a corrector of calcium deficiencies and as a method of control against major diseases such as *phytophthora*, *phytium*, *anthracnose*, *pseudomonas*, *xanthomonas*, *botrytis*, *mildew* and others.



Composition

	(%w/w)
Phosphorus (P ₂ O ₅)	11.0
Calcium (CaO)	5.5





Application system and times

FOSFIMAX Ca® can be applied by foliar spray or through irrigation during the whole crop cycle. It is highly recommended for times when the crop has a greater need for calcium or is more susceptible to possible attacks from phytopathogenic agents, either due to the particularity of each phenological state or the weather conditions.

Stability and storage

FOSFIMAX Ca® is stable for at least 3 years from the date of manufacture.

Keep in a fresh and ventilated place at temperatures below 50°C.

Do not store for prolonged periods under direct sunlight.

Keep away from children.

Do not eat, drink or smoke while handling this product.

Dosage according to crop

CROP	TIME OF APPLICATION	FOLIAR DOSAGE (cc/hl)	COMMENTS
Vine	Recommended at times of maximum need for calcium or times of susceptibility to pathogens	200-300	Preventive and regular applications are recommended
Kiwi			
Stone fruit trees			
Pome fruit trees			
Citrus fruits			
Vegetables			
Corn			
Cereals			
Berries			
Ornamentals			

Compatibility

It is compatible with most crop protection products and nutritional correctors, except for products that contain dicofol, dimethoate, oils and copper. A small volume compatibility test before applying any mixture with this product is recommended. For further information, technical advice or any other enquiries, please contact your local distributor.