



FOSFIMAX 30-20®

ACTIVATOR OF PLANT'S NATURAL DEFENSES AGAINST FUNGI AND BACTERIA

Benefits of use

FOSFIMAX 30-20® is a foliar fertiliser made with potassium phosphate. Its primary function is to activate the plant's endogenous defences against pathogens such as fungi and bacteria by synthesis of phytoalexins, suberin lignins and compounds derived from cinnamic acid; it also has a systemic bactericidal and/or fungicidal effect. Its curative action has a microbial effect by blocking the sporulation of the pathogen by preventing the formation of reproductive structures by modifying its metabolism and cell wall. Its high phosphorus and potassium content also enable it to act as a biostimulant, promoting good plant growth and development at times of peak demand such as blooming or fructification, thus increasing crop yield and quality.

FOSFIMAX 30-20® is a formulation designed to ensure optimal, systemic translocation and absorption, whose efficacy has been proven over the years, establishing it as an effective preventive-curative product against important diseases such as *phytophthora*, *pythium*, *anthracnose*, *pseudomonas*, *xanthomonas*, *botrytis*, *mildew*, and so on.



Composition

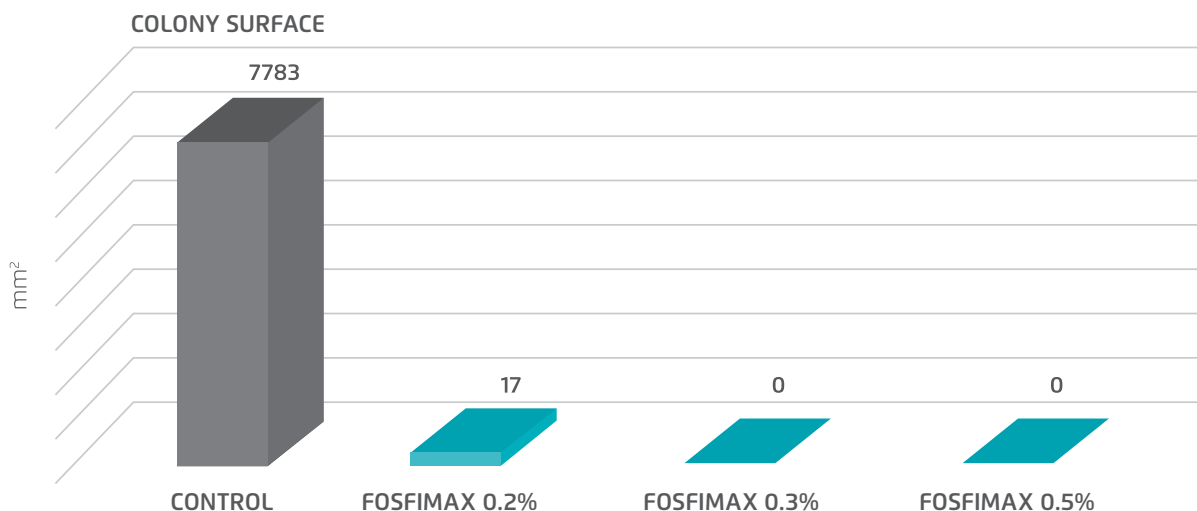
(%w/w)

Phosphorus (P ₂ O ₅)	30.0
Potassium (K ₂ O)	20.0

*Also available: FOSFIMAX 30-20 (Phosphorus 30%, Potassium 20%)

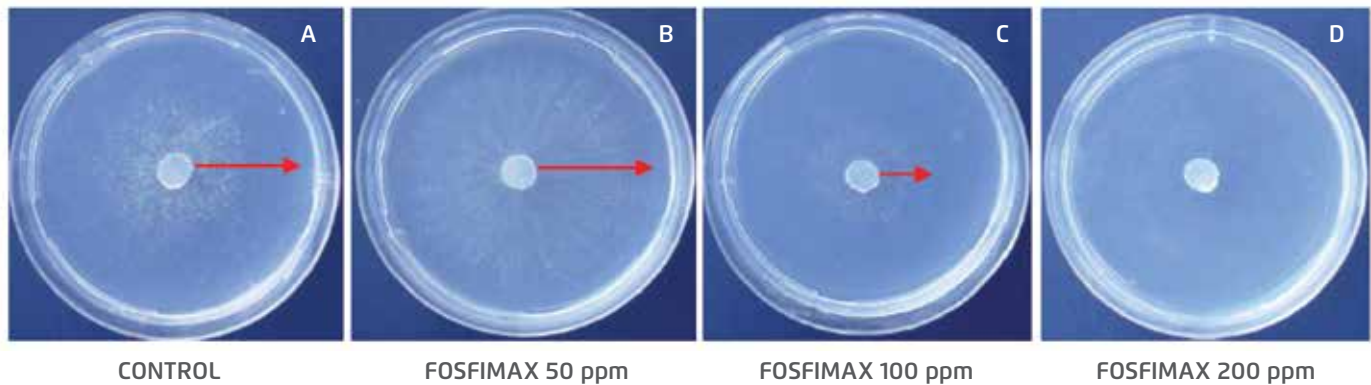
Efficacy Trials

Fungistatic action on Fusarium oxysporum
Laboratory R&D Futureco Bioscience





Fungistatic action on *Fusarium oxysporum*



System of application

FOSFIMAX 30-20® is applied via foliar spray or irrigation, throughout the crop's whole phenological cycle. Especially recommended for times when the crop has a greater nutritional need or is more susceptible to phytopathogenic attacks, either due to the particularity of each phenological state or due to weather conditions.

Stability and storage

FOSFIMAX 30-20® is stable for at least 3 years from the date of manufacture. Store in a cool, ventilated place at temperatures below 50°C. Do not store for prolonged periods in direct sunlight. Keep out of the reach of children. Do not eat, drink or smoke during use.

Dosage

CROP	APPLICATION TIMING	FOLIAR APPLICATION		
		CONCENTRATION ml/200L	DOSE L/ha	
Table grape (Red Globe, Italia, Muscat, and others)	Apply to shoots of 10 to 15cm and bigger. Repeat every 15 to 20 days.	500	3.0 to 4.0	
	Start applications as needed. Apply every 20 to 30 days.		4.0 to 5.0	
Apple, Pear, Peach, Plum, Nectarine, Avocado and Mango Trees	Apply 2-3 times during shoot growth, repeating every 15-20 days, and post-harvest		3.0 to 4.0	
Citrus (Orange, Tangerine, Grapefruit, Lemon)	Apply during the start of root growth in spring and summer/autumn. At least twice in each growth period.		4.5 to 6.0	
Coffee, Cocoa, Banana, Rice	Apply during fruit growth. Repeat every 15 to 20 days.		3.0 to 4.0	
Raspberry and Strawberry	During vegetative growth and fructification		500	1.0 to 3.0
Cranberry	Apply during crop growth and repeat every 7 to 10 days, as needed.		500	2.0 to 3.0
Tomato, Pepper				1.0 to 3.0
Melon, Watermelon, Pumpkin, Artichoke, Asparagus		0.5 to 2.0		
Onion, Garlic		0.5 to 1.5		
Celery, Chard, Lettuce, Spinach, Carrot				
Potato, Sweet Potato	Apply during vegetative growth, until start of tuber maturation.	500	1.0 to 3.0	

Compatibility

Compatible with most crop protection products and nutritional correctors, except products that contain zinc hydroxide, dicofol, dimethoate, oils and copper. It is recommended that a compatibility test be performed in a small volume before applying any mixture with this product. For further information, technical advice or any other enquiries, please contact your local distributor.